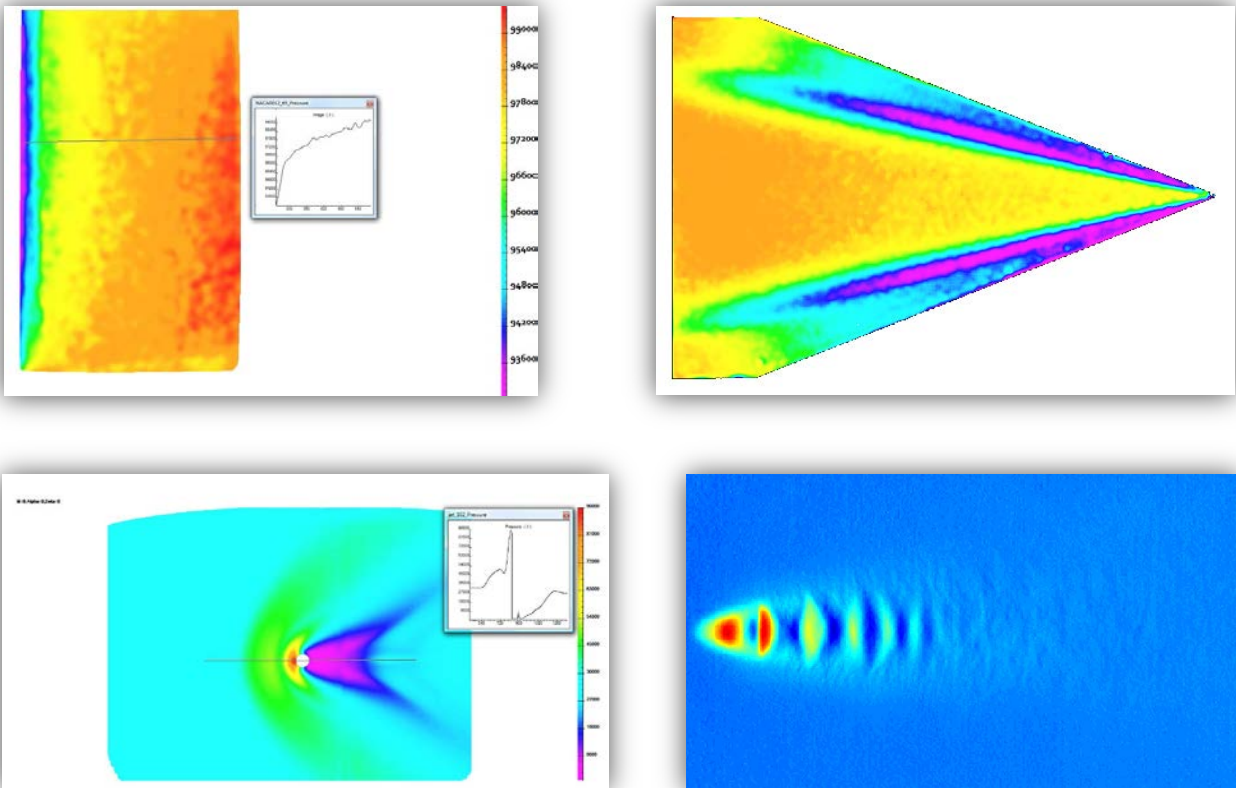


OMS Prolmage

(Product ID: OMS-30i)

OMS Prolmage is an image processing program for use with Pressure-Sensitive Paint data. Prolmage's user interface contains interactive tools such as image math, image filters, ROI selection, marker recognition, image alignment, and automatic resection. Project files that include test conditions, source images, image processing procedures, calibration files, and surface mesh files can be created, modified, and saved. Batch processing of these project files is supported in Prolmage by loading a series of the project files. Prolmage allows the user to interactively modify images at any stage of the data reduction process. Features such as paint scratches, model screw holes, or markers can be interactively filtered to remove them from the final data. The purpose of Prolmage is to provide an interactive interface for PSP users. This will allow the user to focus on the use of PSP for experimental measurements rather than the data reduction procedure. Advanced Prolmage tools include the correcting PSP data using in-situ pressure taps and mapping the final data onto a surface mesh of the model using automatic image registration. Prolmage is recommended for fundamental research, large wind tunnels, or production wind tunnel testing.

OMS Prolmage has an ECCN of EAR99.



Data Reduction in Prolmage

Innovative Scientific Solutions, Inc.
7610 McEwen Road, Dayton, OH 45459
Phone (937) 630-3012, Fax (937) 630-3015

email: issi-sales@innssi.com
web: www.psp-tsp.com

Any and all underlying information and technology contained in this document may be subject to U.S. export controls, including the Export Administration Act (50 U.S.C. Appx. §§ 2401 et seq.) and the Export Administration Regulations ("EAR", 50 C.F.R. Parts 730-774), and may be subject to export or import regulations in other countries. You are responsible for complying with all trade regulations and laws both foreign and domestic. Except as authorized by law or distributor agreement with ISSI, you agree and warrant not to export or re-export the information to any country, or to any person, entity, or end-user subject to U.S. export controls, including without limitation persons or entities listed on the U.S. Department of Commerce Bureau of Export Administration's Denied Parties List and the U.S. Department of Treasury's Specially Designated Nationals. You further represent and warrant that no U.S. federal agency has suspended, revoked, or denied your export privileges.