

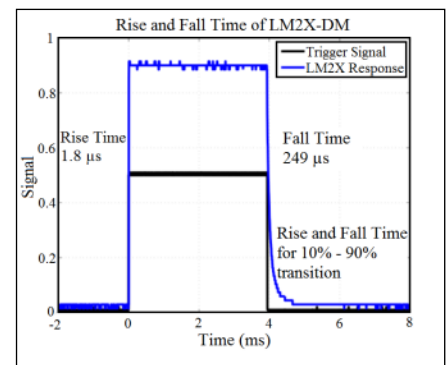
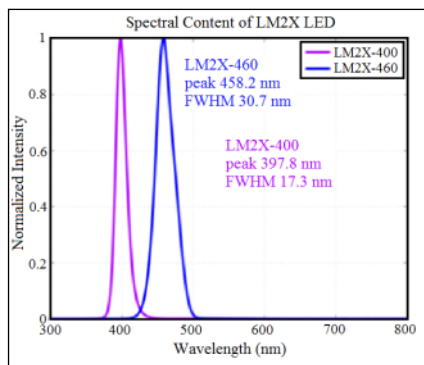
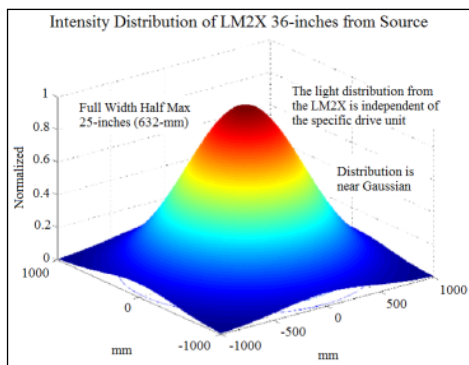
# Continuous 2-inch Air-Cooled LED Light Source

(Product ID: LM2X-DM-XXX)

The continuous 2-inch, air-cooled LED light source provides uniform, stable illumination, for pressure and temperature sensitive paint measurements. The LED is designed for radiometric acquisition systems. It can operate continuously (DC) or in a long-pulsed mode. The operation mode is set using an external toggle switch. In long-pulsed mode, the pulse width and frequency are set by sending an external TTL signal to the BNC trigger input. The duty cycle may be set from 0% to 100%. The light distribution from the unit is approximately Gaussian for distance greater than 18-inches [45-cm] from the source. The units are available in standard wavelengths of 400-nm and 460-nm, however, other wavelengths are available upon request.

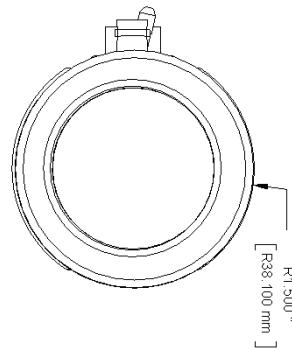
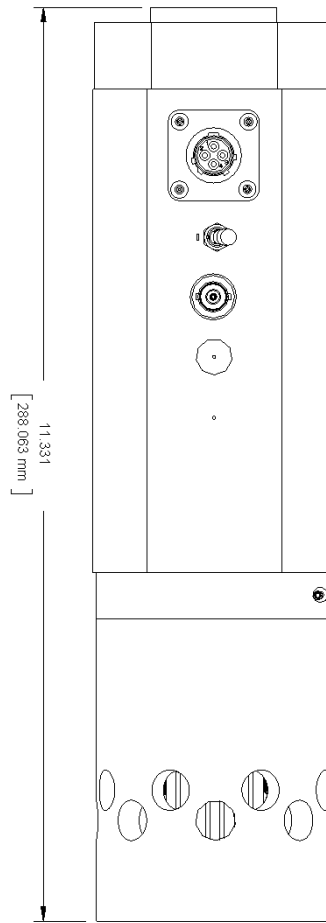


**Ordering information:** LM2X-DM-XXX (LED head with DC/long pulse driver -XXX denotes wavelength)



## SPECIFICATIONS

<b>Optical Power</b>	4-5 W
<b>Input</b>	48V --- 2.7A
<b>Stability</b>	~0.1 % per hour after warmup
<b>Wavelength</b>	400-nm, 460-nm
<b>Rise time (10% - 90%)</b>	< 5 μs
<b>Fall time (90% - 10%)</b>	~ 250 μs
<b>Maximum Duty Cycle</b>	100%
<b>Operating Temperature</b>	-10°C to 60°C
<b>FWHM</b>	+/- 18-nm
<b>ECCN</b>	EAR99



**LM2X-DM-XXX**

Innovative Scientific Solutions, Inc.  
7610 McEwen Road, Dayton, OH 45459  
Phone (937) 630-3012 Fax (937) 630-3015

email: [issi-sales@innssi.com](mailto:issi-sales@innssi.com)  
web: [www.psp-tsp.com](http://www.psp-tsp.com)

Any and all underlying information and technology contained in this document may be subject to U.S. export controls, including the Export Administration Act (50 U.S.C. Appx. §§ 2401 et seq.) and the Export Administration Regulations ("EAR", 50 C.F.R. Parts 730-774), and may be subject to export or import regulations in other countries. You are responsible for complying with all trade regulations and laws both foreign and domestic. Except as authorized by law or distributor agreement with ISSI, you agree and warrant not to export or re-export the information to any country, or to any person, entity, or end-user subject to U.S. export controls, including without limitation persons or entities listed on the U.S. Department of Commerce Bureau of Export Administration's Denied Parties List and the U.S. Department of Treasury's Specially Designated Nationals. You further represent and warrant that no U.S. federal agency has suspended, revoked, or denied your export privileges.